

for questions, contact

ALAN FEDER

608.338.1826

alan@madcitydreamhomes.com



33 acre
PARADISE
found! Country estate
just minutes from Madison.
Custom designed exposed beam,
constructed ranch home. 2 offices, 2 kitchens,
an exercise room and custom CrossFit-style barn
gym. Massive primary suite addition in 2016. Appointed
with hand carved Mahogany doors and custom iron railings. Swim
or fish in your spring-fed 17ft deep pond with private beach and stocked
with smallmouth bass. Enjoy the oak savanna and other perennial flower gardens
planted throughout. Huge pole barn can easily be converted to accommodate horse
stables. Oversized Cleary building with nearby heated garden shed with commercial grade well
(2011) for gardening or potential hobby farm. Endless possibilities. Close to Epic, Military Ridge Trail
and Madison amenities. Your private oasis awaits. Make it your own!



7930 CORAY LANE VERONA, WI 53593

4 bedrooms 4 full bathrooms 1 half bathroom

32.3 acres 4 car garage 6,336 square feet

\$2,199,000





The variety of landscapes and features on your 33-acre compound has something for everyone. Behind the home just a short walk down the hill is the 17-foot deep, spring-fed pond, stocked with smallmouth bass. You can stand on the shore and fish or relax on your private sandy beach. Looking uphill towards the home you'll notice the oak savanna planted throughout the east side of the property. Also of note are the large number of perennial flowers purposefully planted for enjoying the natural setting.

As you walk back toward the home you can see openings in the trees that make up the private network of trails occupying the southeast corner of your acreage. The trails are wide enough to allow for motorized vehicle recreation and intimate enough to enjoy a peaceful walk in the woods. From the front of the home facing west are the three outbuildings. The barn, the large Cleary storage building, and the smaller heated garden shed. The recently paved "road" that connects all three buildings provides easy access and an alternate route from the front of the driveway.

As you pass the entry gate on Coray Lane and head down the private driveway, a wave of relaxation hits your body. Slowly you become immersed in a new environment. The first thing you see is the beautifully crafted large Cleary building that can store cars, farm equipment, 4-wheelers, side-by-sides... you pick the hobby. Next, the heated garden shed comes into view along with the oversized barn. As you round the final bend in the driveway, the custom-built ranch home appears before you.



1



2



The smaller heated garden shed sits to the north. It also has an overhead door for storing larger equipment or working in the fresh outdoors. The commercial-grade well head is housed in this building as well. There's plenty of solar gain with the large south-facing windows, and the heater allows for year-round gardening or easy prepping for the spring planting season.

Most of the land on the west side of the property could provide ample space for a fenced horseback riding area, growing your own fruits and vegetables, or leaving it as is and enjoying the prairie view.

The front of the barn has been converted into a private CrossFit-style gym. This gym is outfitted for a pro. Mirrors, rig, racks, cardio, whatever workout you like, this gym has it (equipment sold separately). There is also a full bathroom for cleaning up without having to go back to the main house. The back side of the barn is a more traditional lower barn level. Horse lovers could easily add stables, and the hayloft upstairs has an easy access overhead door on the west side. Just add string lights and this unique space comes to life for private events -- from dining to dancing.

From the exterior, the large Cleary building is more a work of art than a storage building. The steeple and covered porch leave you feeling as if you want to sit quietly under the covered porch during a rainstorm. Inside there are two large overhead doors for easy vehicle access and storage.





Closer to the home are a number of areas to sit and unwind. The front of the home has a small seating area and firepit to watch the sun set into the Driftless Area horizon. The rear of the home has another sitting area and firepit overlooking the pond. And the large composite deck and pergola provide stunning views of the surrounding landscape. The area immediately surrounding the home and the home itself have strategic exterior professional lighting to highlight the beauty of the property after sunset. This property has so much potential, and its relaxed nature can't be fully appreciated until you come and see it in person.



There are few homes that can literally blow you away just inside the front door. This home does exactly that. The exposed beams and vaulted ceilings combine to provide an unforgettable experience with the added natural light from the skylights. The wrought iron spindles in the solid wood railings surrounding the centrally located stairwell give a rugged, industrial feel to this contemporary custom built and designed ranch. The iron-laced sconces and light fixtures add to that feeling. The vaulted knotty pine ceilings continue throughout the living room, dining area, and kitchen on the main level. The organic natural feel of the home is accented by the Brazilian cherrywood floors and floor-to-ceiling windows bringing the outside in. The stacked stone gas fireplace provides a warm place to relax on those brisk autumn or chilly winter nights. Handmade built-in shelving and cabinets accent the entire home.



The kitchen has plenty of space for the at-home chef in your family. With the oversized island that includes a Wolf 5-burner gas range with pop-up vent, you can prepare meals and still socialize with family and friends. The recently refaced cabinets, double Wolf ovens, and solid surface countertops combined with the updated copper faucet add to the ease of use in this perfectly laid out kitchen.

Off the kitchen is a bright sunroom with access to the deck. The open nature of this part of the home makes entertaining a breeze!



Also adjacent to the kitchen is the laundry/mudroom that leads to the garage. In the mudroom you can't miss the large dog washing station. There's nothing that says humans can't wash themselves off here as well!

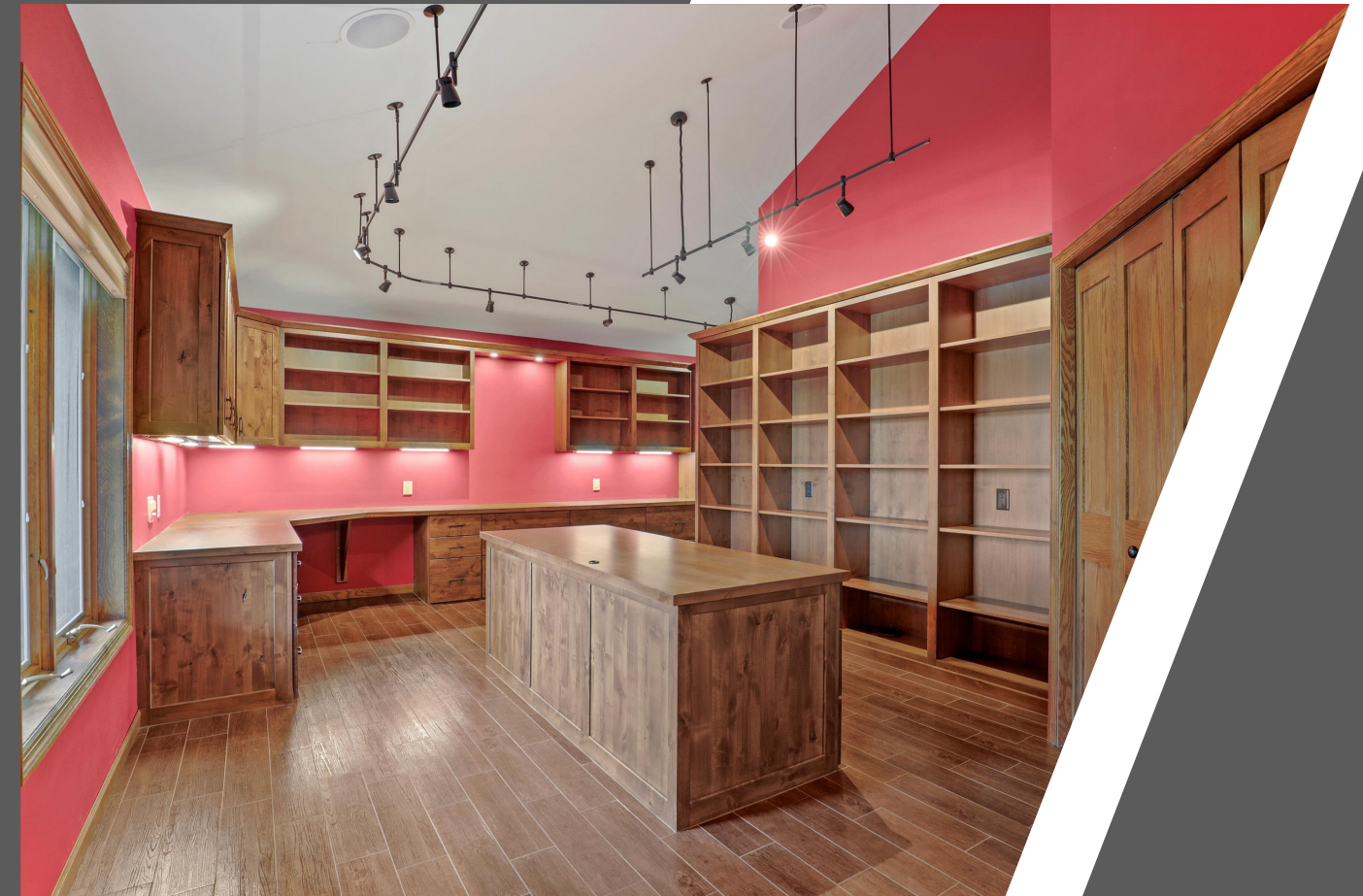




The primary suite is unlike any you've seen. The addition in 2016 added more than 1,200 square feet to this wing of the home. The suite boasts 2 oversized walk-in closets with custom shelving and one with vaulted ceilings, a renovated bathroom, and a large main room with a private stairwell that leads to the large lower level workout room. No excuses for not getting to the gym on time!

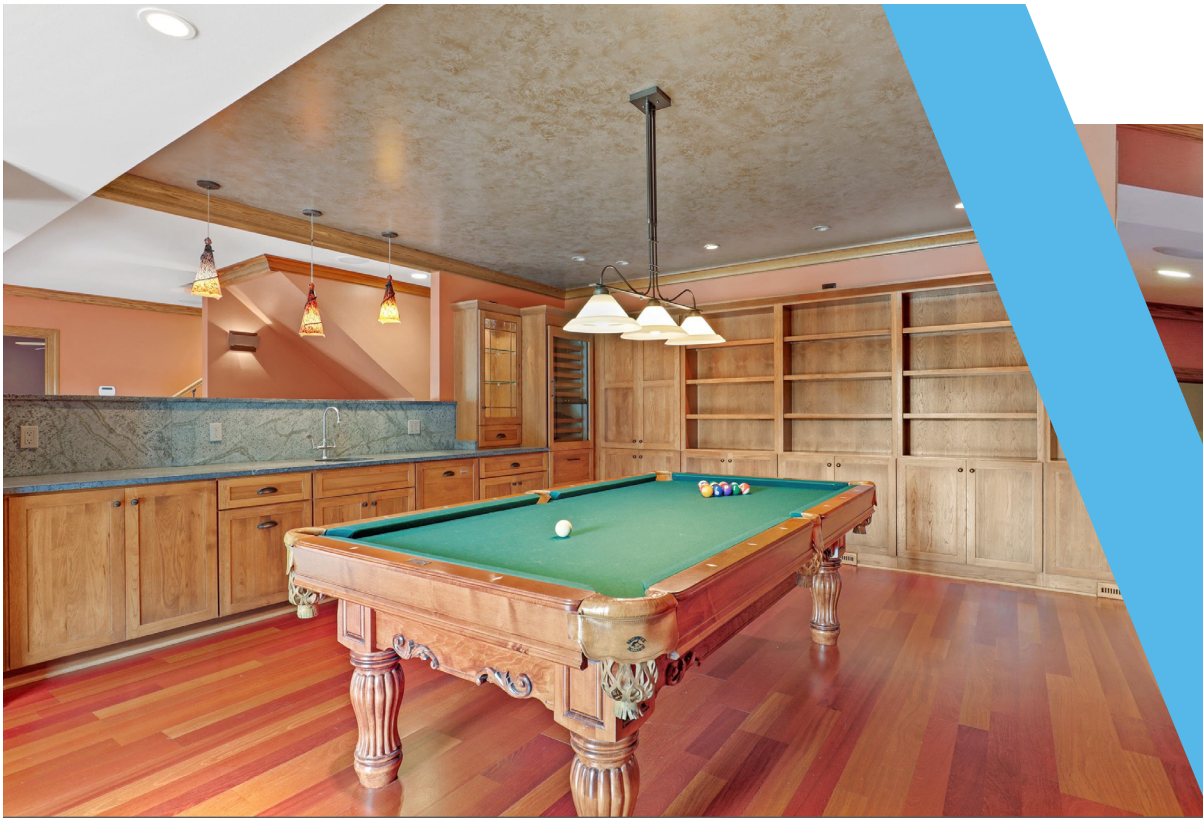


The primary bathroom has a large soaking tub, a tiled walk-in shower, double-sinks, and a private toilet. Large east and north facing windows surround the main room and welcome the rising sun. You'll enjoy built-in furniture throughout this space. Adjacent to the primary suite is one of two offices. This room was also completely renovated in 2016, adding the built-in shelving, workstations, and desk. There's space for students, business owners, or anyone looking to get some work done.



In addition to the workout space in the lower level, a second office space was added in 2016. This office provides a bit more privacy and features several areas to work, including a large desk, shelving, and a stand-up workstation. The built-in bookshelf doubles as a secret door to a small mechanical and storage closet, including a large safe.





As you make your way to the main area of the lower level you find the well-appointed billiard room. With additional built-in shelving you'll also enjoy a wine refrigerator, two beverage drawers, a single dishwasher drawer, and a wet bar. Hosting couldn't be easier!



Adjacent to the billiard room is the family room. With the gas fireplace and room for a large screen TV, it's easy to sit and watch a movie or enjoy the excitement of the big game.





Off the family room are two of the three lower level ensuite bedrooms. Whether it's family or hosting friends, everyone is able to enjoy some privacy with their own bathrooms.

Further down the hall the floor becomes stamped concrete leading to a small second kitchen with a full-sized sink, refrigerator, and microwave. Save your steps for later in the day and your visitors or family can enjoy their morning in solitude.

Off the kitchen is another full bathroom, a bedroom, and a full-sized sauna. This home truly does have it all!

